



H O U S E O F N E E B A

ABOUT US

Introducing House of Neeba: Elevating Culinary Elegance

Welcome to the world of House of Neeba, where artistry meets functionality in the realm of premium serve ware. Our brand stands as a beacon of exquisite craftsmanship, offering a diverse range of products meticulously designed to elevate your dining experiences.

At House of Neeba, we understand that every catering event is a canvas waiting to be adorned with culinary creations. Our commitment to excellence is reflected not only in the aesthetic allure of our products but also in their tailored versatility. We take immense pride in offering customization options, ensuring that each piece seamlessly integrates with the unique requirements of your events.

One facet that distinguishes House of Neeba is our dedication to supporting local craftsmanship. Our products are entirely made in India, a testament to our commitment to nurturing and celebrating the rich heritage of Indian artisans.

This catalogue is an invitation to explore the symphony of design, function, and tradition that House of Neeba embodies. Join us in crafting unforgettable dining moments that leave a lasting impression. As you peruse these pages, envision the possibilities that our premium serve ware brings to your table, each piece telling a story of elegance, heritage, and excellence.

Indulge in the House of Neeba experience – where every detail matters and every presentation is a work of art.

Welcome to a journey of timeless elegance,

The House of Neeba Team

MOSS GARDEN PLATTER

If you are looking for a wow factor at your holiday table, you have come to the right place. This elegant wooden serving platter resting atop the little moss garden set in the uniquely shaped mango wood base is a serveware that will definitely grab eyeballs. This decorative platter is sure to grab eyeballs and leave your guests impressed. The wooden platter with grass and moss stones bring nature to your tables.



DESCRIPTION

SIZE: LENGTH- 30" WIDTH-10" HIEGHT:5"

**MATERIAL: MANGOWOOD,
GLASS, FAUX PLANTS**

CUSTOMIZABLE

TRUNK PLATTER

Make a perfect first impression when welcoming guests into your home with the quirky yet regal Rahi Suitcase platter. Designed for a unique table setting it can be used for bite-sized food as well as desserts. The elegant serving tray is presented in Mangowood with a retro Sixties design, comfortable leatherette handles, and a grass mat lining inside to bring a touch of nature to your setup. this luxury wooden serving tray is a graceful showpiece, helping you host a charming party in style. Easy to store as well, just fold the lid back, stack it, and keep it safe.



DESCRIPTION

SIZE: LENGTH- 30" WIDTH-12" HIEGHT:5"

**MATERIAL: MANGOWOOD,
D, GLASS, FAUX GRASS**

CUSTOMIZABLE

NEER THREE TIER PLATTER

Shop modern 3-tier high tea stands and offer canapes or finger sandwiches like a pro. Stun your guests with aesthetic presentation and redefine luxury with a three-tier wooden serving platter. Make your next party an event to be remembered!

Imagine this elegant wood tray sitting on your table, enriched by captivating desserts, lusciously arranged on its tiers. Its design makes it ideal for afternoon tea. It will certainly enrich your display and enchant your guests!



DESCRIPTION

SIZE: LENGTH- 30" WIDTH- 22" HIEGHT- 2.5"

MATERIAL: MANGOWOOD

CUSTOMIZABLE SIZE AND COLOUR



**WOOD AND MARBLE
PLATTER**

MATERIAL: MANGO WOOD
AND MARBLE
SIZE: CUSTOMZABLE



GOLD CHARGER PLATE

MATERIAL: METAL
DIAMETER: 12"



SILVER CHARGER PLATE

MATERIAL: METAL
DIAMETER: 12"



**PINEAPPLE WOOD AND
MARBLE PLATTER**

MATERIAL: MANGO WOOD
AND MARBLE
SIZE: CUSTOMZABLE



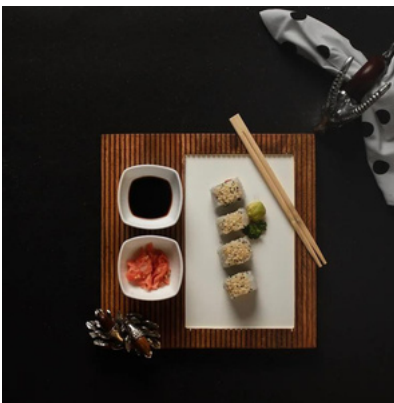
PEANUT BOWL

MATERIAL: METAL



CRESCENT TRAY

MATERIAL: METAL



ACORN WOOD PLATTER

MATERIAL: MANGO WOOD
SIZE: CUSTOMZABLE



**WOODEN 3-TIERED
PLATTER**

MATERIAL: MANGO WOOD
SIZE: CUSTOMZABLE



**OBLONG WOODEN
PLATTER**

MATERIAL: MANGO WOOD
SIZE: CUSTOMZABLE

P L A T T E R S



MOROCCON TILE PLATTERS

MATERIAL: MANGO WOOD
TILES, FAUX GRASS
SIZE: CUSTOMZABLE





**WOOD AND MARBLE
PLATTER**

MATERIAL: MANGO WOOD
AND MARBLE
SIZE: CUSTOMZABLE



RABBIT HIGH TEA STAND

MATERIAL: MANGOWOOD
AND METAL



SILVER CHARGER PLATE

MATERIAL: METAL
DIAMETER: 12"



**KANAK SERVING SPOON
SET**

MATERIAL: STAINLESS
STEEL



**ARAGHYA SERVING
SPOON SET**

MATERIAL: STAINLESS
STEEL AND RHINESTONE



**JADAU SERVING SPOON
SET**

MATERIAL: STAINLESS
STEEL AND RHINESTONE



GOLD CAKE DOME

MATERIAL: METAL AND
GLASS
SIZE: 11.5" DIAMETER.
CUSTOMXABLE



CONTACT US

Experience the sophistication of House of Neeba for yourself. Elevate your culinary presentations with our premium serve ware that marries style with functionality. Our dedicated team is ready to assist you in selecting the perfect pieces to adorn your events, making them truly unforgettable.

For inquiries, orders, and personalized assistance, please contact us at:

Phone: 9820955621 / 9826448896

Email: nouseofneebea@gmail.com

Website: www.houseofneebea.com

Follow us on social media to stay updated with our latest offerings, inspirations, and behind-the-scenes glimpses:

Instagram: [@houseofneebea](https://www.instagram.com/houseofneebea) Facebook: [/houseofneebeamumbai](https://www.facebook.com/houseofneebeamumbai)

At House of Neeba, we believe that every gathering, every event, and every meal is an opportunity to create something extraordinary. We take great pride in providing complete customisation to our clients. We extend our heartfelt gratitude for allowing us to be a part of your culinary journey, and we look forward to helping you curate captivating dining experiences for years to come.

Thank you for choosing House of Neeba. Here's to elevating elegance and celebrating moments that linger in the memory.

Yours in culinary artistry,
The House of Neeba Team